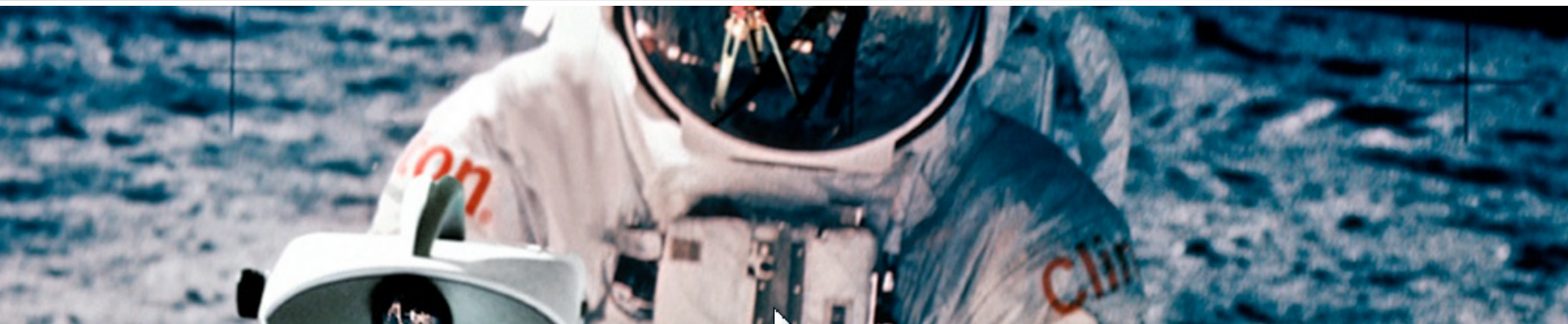
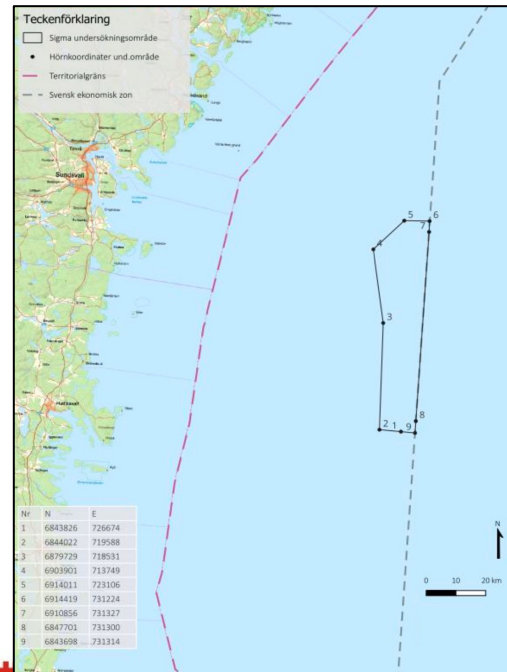
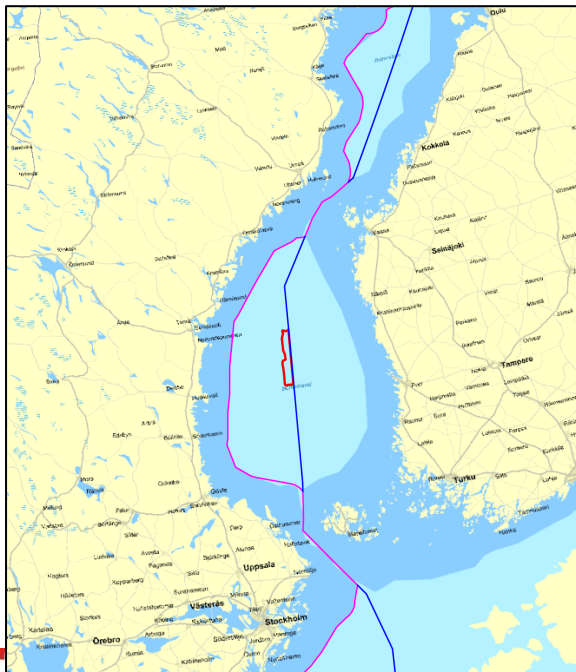


Notice to Mariners Geophysical survey, Southeast of Sundsvall area Bothnian Sea



- ❑ **VESSEL:** M/V NORTHERN STORM
- ❑ **MANEUVERABILITY:** LIMITED
- ❑ **EQUIPMENT:** HULLMOUNTED & TOWED SYSTEMS
(TOWED SYSTEMS ARE TOWED CLOSE TO SEABED)
- ❑ **TIME:** 1ST OF MAY 2024 TO 30TH OF SEPTEMBER
(ON AND OFF DURING THIS PERIOD, NOT CONTINUOUS OPERATION)
- ❑ **AIM:** GEOPHYSICAL CONDITIONS FOR A POTENTIAL WIND FARM



M/V Northern Storm

Calls sign: MISA7

Bridge: +46 31 30 11 132

Email: master-northernstorm@clinton.se

Contact person at Clinton Marine Survey:

Philip Ljungström	Project Manager	+46 708 79 90 26
Martin Wikmar	CEO	+46 708 79 90 20

